

TASMANIAN STATISTICAL INDICATORS

EMBARGO: 11:30AM (CANBERRA TIME) WED 8 APRIL 1998

C O N T E N T S

	<i>page</i>
COMMENTARY	v
 SUBJECT AREAS	
1 Population and demography	1
2 Labour force	2
3 Wages and prices	10
4 Production	15
5 Primary industry	16
6 Building	20
7 Finance	21
8 Tourism	22
9 Transport	24
10 Retail trade	24
11 Australia and State comparisons	25
 ADDITIONAL INFORMATION	
Explanatory notes	26

I N Q U I R I E S

- For more information about these and related statistics, contact Information Services on 03 6222 5800 or refer to the back cover of this publication.

**TASMANIAN STATISTICAL INDICATORS
APRIL 1998**

**Denis W. Rogers
Regional Director, Tasmania**

AUSTRALIAN BUREAU OF STATISTICS

CATALOGUE NO. 1303.6

CONTENTS

	Page
MAIN FEATURES	v
TABLES	
1 Population	1
2 Births, deaths and marriages registered	1
3 Labour force status	2
4 Labour force status by region, males	3
5 Labour force status by region, females	4
6 Labour force status by region, persons	5
7 Teenage labour market	6
8 All employed persons by occupation	7
9 Employed wage and salary earners, sector and industry	8
10 Average hours worked	8
11 Job vacancies	9
12 Industrial disputes	9
13 Average weekly earnings of employees	10
14 Weekly award rates of pay indexes, full-time adult employees	10
15 Summary of annual movements in wages and prices	11
16 House price index numbers, Hobart	11
17 Consumer price index, Hobart and eight capital cities combined	12
18 Price index of materials used in building other than house building, Hobart	13, 14
19 Production of selected commodities	15
20 Livestock slaughtering: original	16
21 Livestock slaughtering: seasonally adjusted and trend	16
22 Meat production	17
23 Principal mineral concentrates produced	17
24 Sawmills and plywood mills, logs delivered and timber produced	18
25 Chipping and grinding of wood	18
26 Logs delivered for milling or chipping	19
27 Building approvals	20

INQUIRIES

- *for further information about statistics in this publication and the availability of related unpublished statistics, contact the Hobart office of the ABS on (03) 6222 5800.*
- *for information about other ABS statistics and services, please refer to the back cover of this publication.*

	Page
28 Secured housing commitments	20
29 Banking statistics	21
30 Private new capital expenditure by type of asset	21
31 Passenger arrivals and departures, Tasmania	22
32 Total passenger arrivals by air and sea, Tasmania	22
33 Accommodation statistics	23
34 Registrations of new motor vehicles	24
35 Turnover of retail establishments at current prices	24
36 Major Statistical Indicators—Australia and State comparisons	25
 EXPLANATORY NOTES	 26

MAIN FEATURES

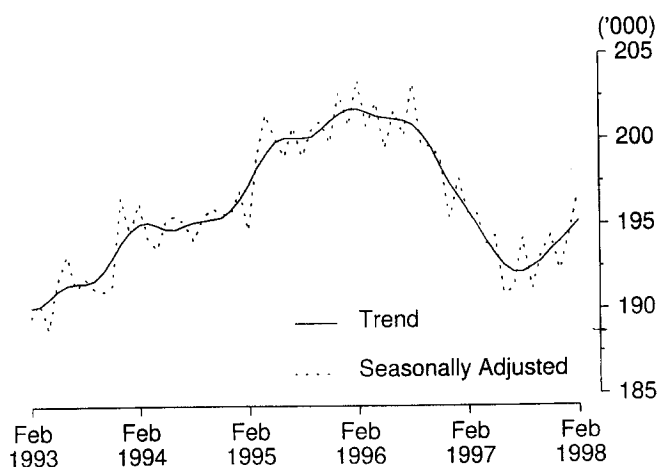
EMPLOYMENT

State comparisons

Trend estimates

The Australian and State *trend* series comparisons are given on page 25. There was a decrease of 0.3% in Tasmania's employment over the year to February 1998. The largest percentage increase in employment was in Queensland (4.0%). Next followed Western Australia (2.3%), Victoria (1.4%) and New South Wales (0.6%).

EMPLOYMENT, TASMANIA



Regional comparisons

Original terms

In the Hobart and Southern Statistical Divisions the estimate of employment in *original* terms in December 1997 was 93,100, and compares with 103,100 in December 1996. The estimate of employment in the Northern Statistical Division in December 1997 was 54,300 and compares with 55,500 in December 1996. The estimate of employment in the Mersey-Lyell Statistical Division was 48,000 in December 1997, and compares with 40,000 in December 1996. (See tables 4-6, pages 3-5.)

THE LABOUR FORCE

Trend estimates

There were an estimated 218,800 persons (based on *trend* estimates) in the labour force in February 1998 and an estimated 369,400 civilian Tasmanians aged 15 years or more, yielding a labour force participation rate of 59.2%. This compares with 59.3% in February 1997.

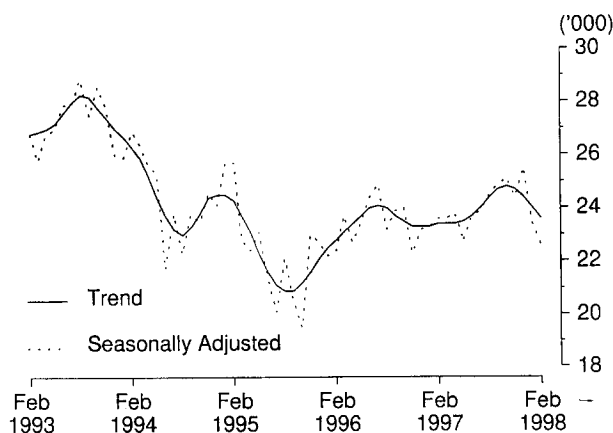
For males, the *trend* estimate of the participation rate was 70.0%, compared with 69.8% for February 1997. For females, the *trend* estimate of the participation rate was 48.8%, compared with 49.2% in February 1997.

(See table 3, page 2.)

UNEMPLOYMENT

Trend estimates The *trend* estimate of the number of unemployed persons in Tasmania for February 1998 was 23,600. This compares with 23,400 for February 1997. The *trend* estimate of the unemployment rate of 10.8% in February 1998 compares with 10.7% in February 1997. (See table 3 page 2.)

UNEMPLOYMENT, TASMANIA



BUILDING MATERIALS PRICE INDEXES

Original terms The price index of materials used in house building in Hobart increased by 0.7% for the twelve months ending December 1997. All other capital cities recorded increases over this period, with Sydney being the highest at 3.1%. The weighted average of the six State capital cities increased by 1.8% over the same period.

For materials used in building other than house building, the price index for Hobart recorded an increase of 0.9% over the year ending December 1997. All of the other State capitals recorded increases with Sydney being the highest at 1.4% and Perth the lowest at 0.4%. The index for the weighted average of the six State capital cities increased by 1.1% over the same period.

Components in Hobart's price index of materials other than house building that recorded the largest increases over the year ending December 1997 were steel decking and cladding (up 6%), clay bricks (up 3.4%) and reinforcing steel bar, fabric and mesh (up 1.9%). These rises were partly offset by falls in the prices of sand and aggregate (down 8.8%) and builders' hardware (down 5.3%). (See table 15, page 11 and table 18, page 13).

CONSUMER PRICE INDEX

Original terms The Consumer Price Index All Groups Index for Hobart rose by 0.5% in the December quarter of 1997 and fell by 0.1% for the year ending December 1997. This compared with an increase of 0.3% for the weighted average of the eight capital cities for the December quarter, and a fall of 0.2% for the year.

The only capital city to record an increase in the index for the year ending December 1997 was Brisbane with an increase of 0.5%. Capital cities recording the largest decrease were Canberra (-1.3%) and Adelaide (-1.1%).

(See table 17, page 12.)

HOUSE PRICE INDEXES

Original terms The price index for established houses in Hobart increased by 0.3% in the December quarter 1997, but still decreased by 3.6% over the twelve months ending December. This was due to the effect of several quarters of negative change during the year. All of the eight capital cities recorded increases in the December quarter, with Melbourne being the highest at 5.3%. Hobart's increase was the smallest.

The price index for project homes recorded no change for Hobart in the December quarter, as for the previous six quarters. Canberra and Sydney indexes also recorded no change for the quarter, while most of the other capital cities recorded a small increase. Adelaide was the highest at 0.5%. The index for the weighted average of the eight capitals rose by 0.1%.

For the twelve months ending December, Adelaide recorded the highest increase at 4.8%, while the index in Canberra fell by 0.3%.

(See table 16, page 11)

LIVESTOCK SLAUGHTERING

Trend estimates In January 1998, the *trend* estimate for the slaughtering of cattle and calves in Tasmania was 4.6% higher than the previous month. Over the same period, the number of sheep and lambs slaughtered remained unchanged while the number of pigs slaughtered increased, by 1.7% to just over 6,700.

In January 1998, the *trend* estimate of the number of cattle and calves slaughtered was 27,100 which was 25.0% above the number slaughtered in January 1997.

The *trend* estimate for the slaughtering of sheep and lambs was 75,600 in January 1998, which was 15.7% above the number slaughtered in January 1997, and 18.7% above the *trend* estimate for January 1996.

The *trend* estimate of 6,700 pigs slaughtered in January 1998 was 7.8% above the number slaughtered in January 1997, and 7.8% below the *trend* estimate for January 1996.

(See table 21, page 16.)

BUILDING APPROVALS

Original terms There were 133 dwelling units approved during January 1998 in Tasmania. This was 14.2% below the December 1997 figure of 155 and 13.1% below the number recorded for January 1997 (153).

For the twelve months ended January 1998 there were 1,768 new dwelling units approved, 15.8% below the 2,100 units recorded for the twelve months ended January 1997.

The value of new residential buildings approved, at current prices, in January 1998 was \$11.7 million, 13.6% below the December 1997 figure and 4.5% below the January 1997 figure.

The value of all building approved, at current prices, in January 1998 was \$27.9 million, 3.6% below the December 1997 figure and 4.7% above the January 1997 figure.

(See table 27, page 20.)

HOUSING FINANCE

Trend Estimates The *trend* estimate for the number of new secured housing finance commitments entered into in Tasmania in January 1998 was 829 dwellings, an increase over the previous month's figure of 827, but lower when compared with the January 1997 figure of 857.

The value of new commitments has risen steadily since March 1997 to the January 1998 figure of \$62.7 million. When compared with the January 1997 value of \$58.3 million, an increase of 7.5% is observed.

Nationally, the total number of secured housing commitments entered into in January 1998 was 40,275, a slight increase over the previous month's figure of 40,264. The value of these commitments increased between December 1997 and January 1998 to \$4,668.1 million.
(see table 28, page 20.)

PRIVATE NEW CAPITAL EXPENDITURE

Original terms Total new capital expenditure, in Tasmania, for the December quarter 1997 was \$186 million. This was 6.9% above the figure recorded in the September quarter 1997 and 3.1% below the December quarter 1996 figure.
(See table 30, page 21.)

TOURIST ACCOMMODATION

Original terms For hotels, motels and guest houses in Tasmania, the room occupancy rate for the December quarter 1997 was 53.2% compared with 54.8% for the December quarter 1996. Although demand in terms of room nights occupied increased by 2.5%, from 282,767 to 289,867, the number of rooms available increased by 5.7% over the same period. For the same period, takings from accommodation for hotels, motels and guest houses increased 6.4% to \$24.0 million and average takings increased from \$80 to \$83 per room night occupied.

For holiday flats, units and houses, the unit occupancy rate decreased to 50.6% for the December quarter 1997 compared with 52.9% for the December quarter 1996. Takings from accommodation increased 8.3% to \$3.2 million and average takings increased from \$71 to \$74 per unit night occupied.

For caravan parks, the site occupancy rate increased marginally to 34.1% for the December quarter 1997 compared with 33.1% for the December quarter 1996. Takings from accommodation increased 7.8% to \$2.1 million.

NEW MOTOR VEHICLE REGISTRATIONS

Original terms There were 925 new motor vehicles (excluding motorcycles) registered in Tasmania during January 1998. This was 57.0% below the 2,153 registered in December 1997 and 1.1% below the figure for January 1997 (935). Of the new motor vehicles (excluding motorcycles) registered in January 1998 in Tasmania, 12 were vehicles registered by vehicle rental businesses compared with 865 registered by vehicle rental businesses in December 1997 and 4 in January 1997. (See table 34, page 24.)

RETAIL

Original terms In *original* terms, the estimate of retail turnover in Australia during January 1998 was \$11,262.7 million, 5.6% above the figure recorded in January 1997. In *original* terms, the estimate of retail turnover in January 1998, for Tasmania, was \$260.4 million, 1.5% above the figure recorded in January 1997.

Trend estimates The *trend* estimate of retail turnover in Australia during January 1998 was \$11,265.3 million, 4.7% above the figure recorded in January 1997. The *trend* estimate of retail turnover in Tasmania recorded for January 1998, was \$267.8 million, 3.7% above the figure recorded in January 1997. (See table 35, page 24.)

1

POPULATION: Original

	Estimated resident population at end of period	Natural increase ¹	Net estimated migration gain	Total population growth	Annual growth rate ²
Year or quarter	'000	'000	'000	'000	%
Year ended 30 June					
1993	471.7	3.1	- 1.4	1.8	0.39
1994	473.0	3.1	- 1.9	1.3	0.27
1995	473.7	3.0	- 2.3	0.7	0.16
1996	474.4	2.5	- 2.2	0.8	0.16
1997 p	473.5	2.4	- 3.4	- 0.9	- 0.20
Quarter					
1996					
March	474.2	0.7	- 0.8	0.1	0.11
June	474.4	0.5	- 0.4	0.3	0.16
September p	474.5	0.6	- 0.5	0.0	0.10
December p	474.1	0.6	- 1.1	- 0.4	- 0.01
1997					
March p	473.6	0.7	- 1.1	- 0.5	- 0.13
June p	473.5	0.6	- 0.7	- 0.1	- 0.20
September p	472.7	0.5	- 1.3	- 0.8	- 0.37

¹ Excess of live births registered over deaths registered (based on usual State of residence).

² Percentage growth from same quarter in previous year.

(Source: Australian Demographic Statistics, ABS catalogue number 3101.0)

2

BIRTHS, DEATHS AND MARRIAGES REGISTERED: Original

Year or quarter	Births		Deaths		Infant mortality ¹		Marriages	
	No.	Rate ²	No.	Rate ²	Deaths	Rate ³	No.	Rate ²
Year ended 31 December								
1992	6 956	14.8	3 722	7.9	43	6.2	3 081	6.5
1993	6 804	14.4	3 618	7.7	37	5.4	3 055	6.5
1994	6 836	14.4	3 909	8.3	46	6.7	2 887	6.1
1995	6 558	13.8	3 739	7.9	36	5.5	2 840	6.0
1996	6 431	13.6	3 878	8.2	27	4.2	2 654	5.6
Quarter								
1996								
March	1 767	..	979	..	10	5.7	858	..
June	1 524	..	969	..	6	3.9	789	..
September	1 607	..	1 028	..	8	5.0	349	..
December	1 533	..	902	..	3	2.0	658	..
1997								
March p	1 521	..	862	..	6	3.9	896	..
June p	1 543	..	973	..	8	5.2	600	..
September p	1 559	..	1 093	..	10	6.4	554	..

¹ Registered deaths of children under one year of age.

² Rate per 1,000 of estimated mean population.

³ Rate per 1,000 live births.

(Source: Australian Demographic Statistics, ABS catalogue number 3101.0)

Month	Seasonally adjusted series ²				Trend series ²			
	Employed	Unemployed	Unemployment rate	Participation rate	Employed	Unemployed	Unemployment rate	Participation rate
	'000	'000	%	%	'000	'000	%	%
MALES								
1997								
February	112.4	14.2	11.2	69.7	112.7	14.1	11.1	69.8
March	113.1	14.1	11.1	70.0	112.3	14.2	11.2	69.6
April	111.5	14.9	11.8	69.6	111.9	14.2	11.3	69.4
May	112.2	13.5	10.7	69.2	111.7	14.2	11.3	69.3
June	110.9	13.8	11.1	68.6	111.7	14.2	11.3	69.2
July	110.9	15.2	12.1	69.4	111.8	14.2	11.3	69.3
August	112.5	14.5	11.4	69.8	111.9	14.5	11.5	69.5
September	112.7	13.5	10.7	69.4	112.0	14.8	11.7	69.7
October	112.4	15.6	12.2	70.4	111.9	15.2	11.9	69.9
November	111.9	15.6	12.3	70.2	111.8	15.4	12.1	70.0
December	109.9	16.9	13.3	69.7	111.7	15.6	12.3	70.0
1998								
January	112.2	15.2	11.9	70.1	111.6	15.6	12.3	70.0
February	112.0	14.7	11.6	69.8	111.5	15.7	12.3	70.0
FEMALES								
1997								
February	83.3	9.4	10.1	49.3	83.1	9.3	10.0	49.2
March	82.6	9.5	10.3	49.0	82.7	9.2	10.0	49.0
April	82.4	8.9	9.8	48.6	82.2	9.2	10.1	48.7
May	82.2	9.4	10.2	48.7	81.6	9.3	10.3	48.4
June	80.0	9.9	11.0	47.8	81.0	9.5	10.5	48.2
July	80.5	8.7	9.7	47.4	80.5	9.8	10.8	48.0
August	81.7	10.0	10.9	48.8	80.3	9.9	11.0	48.0
September	78.5	11.4	12.7	47.8	80.5	9.9	10.9	48.1
October	80.9	9.5	10.5	48.1	81.0	9.6	10.6	48.2
November	82.5	8.8	9.6	48.6	81.7	9.2	10.1	48.3
December	82.5	8.6	9.4	48.4	82.4	8.8	9.6	48.5
1998								
January	82.3	8.2	9.1	48.2	83.1	8.3	9.1	48.7
February	84.8	7.9	8.5	49.4	83.7	7.9	8.6	48.8
TOTAL								
1997								
February	195.7	23.6	10.8	59.4	195.8	23.4	10.7	59.3
March	195.7	23.6	10.7	59.4	195.0	23.4	10.7	59.1
April	193.9	23.8	10.9	58.9	194.1	23.4	10.8	58.9
May	194.4	22.8	10.5	58.8	193.3	23.5	10.9	58.7
June	190.9	23.7	11.0	58.1	192.6	23.7	11.0	58.5
July	191.3	23.9	11.1	58.2	192.2	24.0	11.1	58.5
August	194.2	24.5	11.2	59.1	192.2	24.4	11.3	58.6
September	191.2	24.9	11.5	58.4	192.5	24.7	11.4	58.7
October	193.3	25.1	11.5	59.1	192.9	24.8	11.4	58.9
November	194.4	24.4	11.2	59.2	193.5	24.7	11.3	59.0
December	192.3	25.5	11.7	58.9	194.0	24.4	11.2	59.1
1998								
January	194.5	23.4	10.8	59.0	194.6	24.0	11.0	59.2
February	196.9	22.6	10.3	59.4	195.2	23.6	10.8	59.2

¹ For explanation of terms and concepts, refer to *Labour Force, Australia*, ABS catalogue number 6203.0.

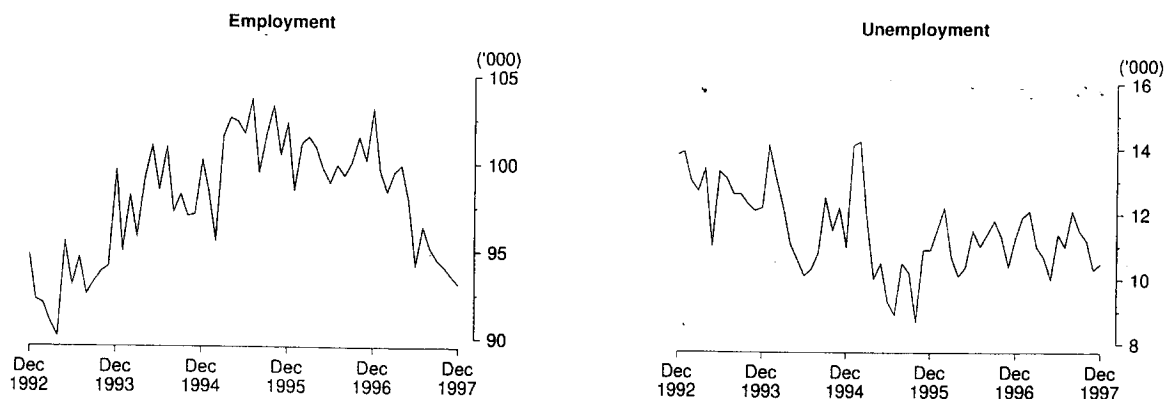
² Seasonal factors are reviewed annually to take account of each additional year's original data. The results of the review are used to compile revised seasonally adjusted and trend estimates each February. Trend estimates for the most recent months are also revised each month; see Explanatory Notes. (Source: *Labour Force Australia*, ABS catalogue number 6203.0)

		Total employed	Total unemployed	Unemployment rate	Participation rate
Month		'000	'000	%	%
HOBART AND SOUTHERN STATISTICAL DIVISIONS					
1994	December	57.1	6.9	10.8	72.8
1996	December	57.0	7.0	10.9	71.3
1997	October	52.6	6.8	11.5	68.6
	November	50.6	6.8	11.8	67.9
	December	50.9	7.7	13.1	69.9
NORTHERN STATISTICAL DIVISION					
1994	December	32.1	4.5	12.2	73.4
1996	December	32.6	4.7	12.6	73.3
1997	October	32.3	4.3	11.8	69.3
	November	32.9	4.1	11.1	69.2
	December	31.4	5.7	15.4	71.6
MERSEY-LYELL STATISTICAL DIVISION					
1994	December	27.0	4.1	13.1	73.3
1996	December	25.0	3.9	13.6	70.6
1997	October	26.9	3.8	12.3	72.3
	November	27.4	4.5	14.1	72.4
	December	29.0	5.4	15.6	74.3
TASMANIA					
1994	December	116.2	15.4	11.7	73.1
1996	December	114.6	15.6	12.0	71.7
1997	October	111.8	14.9	11.8	69.7
	November	110.8	15.4	12.2	69.4
	December	111.3	18.7	14.4	71.5

¹ For explanation of terms and concepts, refer to *Labour Force, Australia*, ABS catalogue number 6203.0.

² Data in this table are original series, i.e. they are not part of a seasonally adjusted or a trend series. Accordingly, care should be exercised when using these data. New monthly data from each quarter (March, June, September and December) are published two months after the quarter. (Source: Labour Force Estimates—microfiche tables.)

Hobart and Southern Statistical Divisions—Persons: **Original** (see Table 6.)

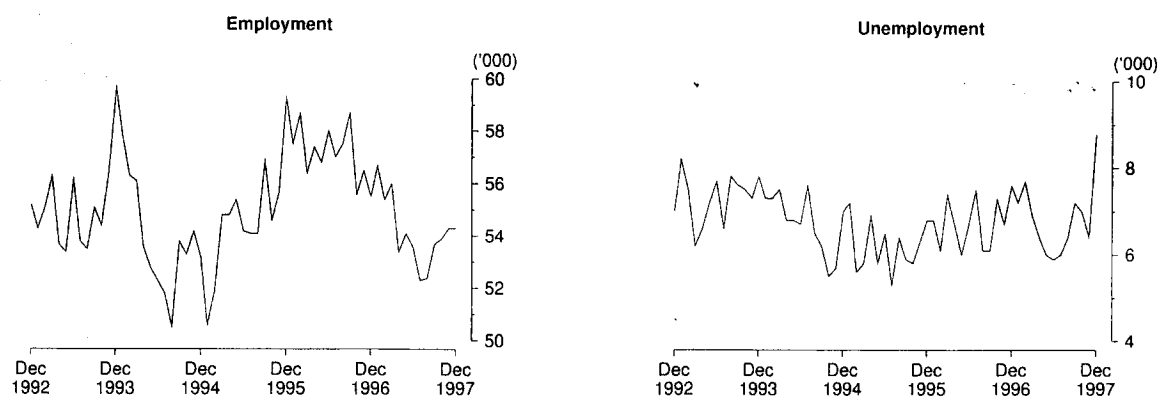


		Total employed	Total unemployed	Unemployment rate	Participation rate
Month		'000	'000	%	%
HOBART AND SOUTHERN STATISTICAL DIVISIONS					
1994	December	43.1	4.1	8.6	51.3
1996	December	46.1	4.4	8.7	53.6
1997	October	41.4	4.3	9.5	50.8
	November	43.1	3.6	7.6	52.8
	December	42.2	2.9	6.4	51.3
NORTHERN STATISTICAL DIVISION					
1994	December	21.0	2.5	10.6	45.0
1996	December	22.8	2.9	11.2	48.1
1997	October	21.7	2.7	11.1	46.4
	November	21.4	2.3	9.6	44.9
	December	22.9	3.1	11.9	49.1
MERSEY-LYELL STATISTICAL DIVISION					
1994	December	18.4	3.1	14.3	50.9
1996	December	15.1	2.3	13.1	43.2
1997	October	17.6	2.7	13.3	44.7
	November	18.6	2.6	12.3	45.1
	December	19.0	3.2	14.3	47.0
TASMANIA					
1994	December	82.6	9.6	10.4	49.5
1996	December	84.0	9.5	10.2	49.8
1997	October	80.7	9.8	10.8	48.1
	November	83.0	8.5	9.2	48.7
	December	84.1	9.2	9.8	49.6

¹ For explanation of terms and concepts, refer to *Labour Force, Australia*, ABS catalogue number 6203.0.

² Data in this table are original series, i.e. they are not part of a seasonally adjusted or a trend series. Accordingly, care should be exercised when using these data. New monthly data from each quarter (March, June, September and December) are published two months after the quarter. (Source: Labour Force Estimates—microfiche tables.)

Northern Statistical Division—Persons: **Original** (see Table 6.)



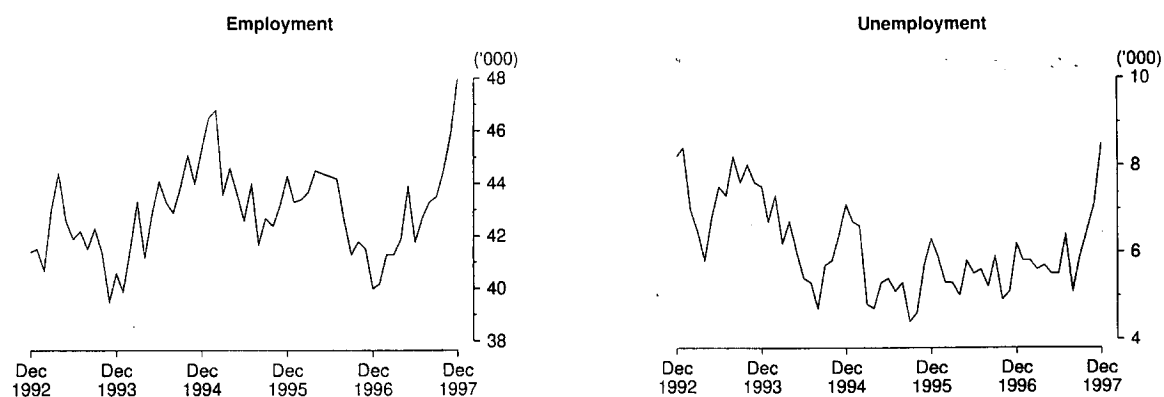
6

LABOUR FORCE STATUS BY REGION, PERSONS^{1, 2}: **Original**

Month		Total employed '000	Total unemployed '000	Unemployment rate %	Participation rate %
HOBART AND SOUTHERN STATISTICAL DIVISIONS					
1994	December	100.2	11.0	9.9	61.8
1996	December	103.1	11.3	9.9	62.2
1997	October	94.1	11.2	10.6	59.6
	November	93.6	10.3	9.9	60.2
	December	93.1	10.5	10.2	60.4
NORTHERN STATISTICAL DIVISION					
1994	December	53.2	7.0	11.6	58.9
1996	December	55.5	7.6	12.1	60.4
1997	October	53.9	7.0	11.5	57.9
	November	54.3	6.4	10.5	57.1
	December	54.3	8.8	13.9	60.3
MERSEY-LYELL STATISTICAL DIVISION					
1994	December	45.4	7.1	13.6	62.1
1996	December	40.0	6.2	13.4	57.0
1997	October	44.5	6.5	12.7	58.0
	November	45.9	7.1	13.4	58.3
	December	48.0	8.5	15.1	60.5
TASMANIA					
1994	December	198.8	25.1	11.2	61.1
1996	December	198.6	25.1	11.2	60.6
1997	October	192.5	24.7	11.4	58.7
	November	193.8	23.8	10.9	58.9
	December	195.4	27.9	12.5	60.4

¹ For explanation of terms and concepts, refer to *Labour Force, Australia*, ABS catalogue number 6203.0.

² Data in this table are original series, i.e. they are not part of a seasonally adjusted or a trend series. Accordingly, care should be exercised when using these data. New monthly data from each quarter (March, June, September and December) are published two months after the quarter. (Source: Labour Force Estimates—microfiche tables.)

Mersey-Lyell Statistical Division—Persons: **Original** (see Table 6.)

TEENAGE LABOUR MARKET											
		Employed		Unemployed							
		Full-time	Total	Looking for full-time work	Total	Labour force	Not in labour force	Civilian population aged 15-19	Unem- ployment rate	Unem- ployment population ratio	Partici- pation rate
Month		'000	'000	'000	'000	'000	'000	'000	%	%	%
ATTENDING NEITHER SCHOOL NOR A TERTIARY INSTITUTION FULL TIME											
1995	February	6.8	9.7	4.1	4.3	14.0	2.3	16.3	30.6	26.4	86.1
1997	February	6.7	8.7	3.2	3.2	11.9	2.3	14.3	27.3	22.8	83.6
1997	December	6.4	9.9	2.1	2.8	12.6	2.8	15.5	21.9	17.9	81.7
1998	January	6.4	10.2	3.1	3.4	13.5	2.1	15.6	24.8	21.5	86.8
	February	6.1	9.2	2.9	3.0	12.2	1.6	13.8	24.7	21.8	88.3
ATTENDING SCHOOL OR A TERTIARY INSTITUTION FULL TIME											
1995	February	0.7	5.8	0.9	2.0	7.7	10.0	17.7	26.0	11.3	43.5
1997	February	1.0	6.0	0.6	1.7	7.7	12.3	20.0	22.2	8.6	38.6
1997	December	0.6	6.2	0.9	3.0	9.2	9.8	19.0	32.3	15.7	48.4
1998	January	0.5	5.9	0.6	2.4	8.2	10.7	18.9	28.8	12.6	43.5
	February	0.3	6.8	0.6	1.7	8.5	12.2	20.7	20.3	8.4	41.2
TOTAL											
1995	February	7.5	15.5	5.0	6.3	21.8	12.3	34.0	28.8	18.5	64.0
1997	February	7.7	14.7	3.7	5.0	19.6	14.5	34.3	25.3	14.5	57.3
1997	December	6.9	16.1	3.0	5.7	21.9	12.6	34.5	26.3	16.7	63.3
1998	January	7.0	16.0	3.7	5.7	21.8	12.7	34.5	26.3	16.6	63.1
	February	6.4	16.0	3.5	4.7	20.7	13.8	34.5	22.9	13.8	60.0

¹ Persons aged 15-19 years.

² For explanation of terms and concepts, refer to *Labour Force, Australia*, ABS catalogue number 6203.0.
(Source: Labour Force Estimates—unpublished data.)

Occupation	November 1996		November 1997		Proportion of total employed	
	Persons		Males	Females	Persons	
	'000	'000	'000	'000	November 1996 %	November 1997 %
Managers and administrators	11.8	10.5	3.0	13.5	6.0	7.0
Generalist managers	1.2	1.2	0.1	1.4	0.6	0.7
Specialist managers	4.0	3.7	0.9	4.7	2.0	2.4
Farmers and farm managers	6.6	5.5	2.0	7.5	3.3	3.9
Professionals	30.7	18.0	16.7	34.7	15.5	17.9
Science, building and engineering professionals	3.4	3.5	0.3	3.8	1.7	2.0
Business and information professionals	4.8	4.6	2.0	6.7	2.4	3.5
Health professionals	8.4	1.7	5.8	7.5	4.2	3.9
Education professionals	7.9	3.8	6.5	10.3	4.0	5.3
Social, arts and miscellaneous professionals	6.2	4.4	2.0	6.4	3.1	3.3
Associate professionals	16.7	12.0	5.7	17.7	8.4	9.1
Science, engineering and related associate professionals	2.3	1.9	0.2	2.0	1.2	1.0
Business and administration associate professionals	2.3	2.1	1.0	3.1	1.2	1.6
Managing supervisors (sales and service)	8.8	6.0	3.0	9.0	4.4	4.6
Other associate professionals	3.2	2.0	1.6	3.5	1.6	1.8
Tradespersons and related workers	26.7	25.1	3.9	29.0	13.5	15.0
Mechanical and fabrication engineering tradespersons	5.3	6.0	0.0	6.0	2.7	3.1
Automotive tradespersons	2.4	2.5	0.0	2.5	1.2	1.3
Electrical and electronics tradespersons	4.1	4.1	0.0	4.1	2.1	2.1
Construction Tradespersons	6.1	5.0	0.1	5.0	3.1	2.6
Other tradespersons and related workers	8.9	7.6	3.8	11.4	4.5	5.9
Advanced clerks and service workers	3.8	0.7	2.8	3.5	1.9	1.8
Secretaries and personal assistants	2.0	0.0	1.6	1.6	1.0	0.8
Other advanced clerical and service workers	1.8	0.7	1.1	1.8	0.9	0.9
Intermediate clerical, sales and service workers	39.5	10.9	27.5	38.8	19.9	20.0
Intermediate clerical workers	22.7	6.0	18.2	24.2	11.4	12.5
Intermediate sales and related workers	4.2	2.1	0.9	3.0	2.1	1.5
Intermediate service workers	12.6	2.8	8.3	11.2	6.4	5.8
Intermediate production and transport workers	21.4	15.2	1.2	16.5	10.8	8.5
Intermediate plant operators	7.3	4.7	0.0	4.7	3.7	2.4
Intermediate machine operators	2.7	1.0	0.4	1.4	1.4	0.7
Road and rail transport drivers	6.8	5.4	0.4	5.8	3.4	3.0
Other intermediate production and transport workers	4.6	4.2	0.4	4.6	2.3	2.4
Elementary clerical, sales and service workers	21.3	7.6	14.6	22.2	10.7	11.5
Elementary clerks	2.5	0.7	1.1	1.8	1.3	0.9
Elementary sales workers	17.0	5.8	12.6	18.4	8.6	9.5
Elementary service workers	1.9	1.1	0.8	2.0	1.0	1.0
Labourers and related workers	26.3	10.8	7.7	18.4	13.3	9.5
Cleaners	6.4	2.0	3.4	5.4	3.2	2.8
Factory labourers	5.7	2.1	1.2	3.3	2.9	1.7
Other labourers and related workers	14.2	6.7	3.0	9.7	7.2	5.0
Total employed	198.3	110.8	83.0	193.8	100.0	100.0

¹ From August 1997, revisions to the Australian Standard Classification of Occupations (ASCO) have resulted in changes to this table.

² For explanation of terms and concepts, refer to *Labour Force, Australia*, ABS catalogue number 6203.0.

(Source: Labour Force Estimates—unpublished data.)

9

EMPLOYED WAGE AND SALARY EARNERS, SECTOR AND INDUSTRY¹: Original

Industry	Employees, August 1997			Percentage distribution	
	Private No. ('000)	Public No. ('000)	Private and public No. ('000)	August 1995	August 1997
Agriculture, forestry, & fishing	n.a.	0.6	0.6	n.a.	0.4
Mining	1.7	—	1.7	1.7	1.0
Manufacturing	21.7	0.1	21.8	14.0	13.2
Electricity, gas & water, Construction	6.5	2.2	8.7	6.1	5.3
Wholesale & Retail trade	31.0	—	31.1	19.0	18.8
Accommodation, cafes & restaurants	11.1	—	11.1	6.2	6.7
Transport & storage	4.3	1.1	5.4	3.6	3.3
Communication services	0.5	2.2	2.7	1.5	1.6
Finance, insurance, Property & business services	17.1	1.0	17.9	9.9	10.8
Education	4.0	14.0	18.0	10.8	10.9
Government administration and defence	—	10.0	10.0	7.1	6.1
Health and community services	14.4	9.2	23.6	14.6	14.3
Cultural, recreational, Personal and other services	10.1	2.5	12.5	5.3	7.6
Total all industries	122.4	42.8	165.2	100.0	100.0

¹ For explanation of terms and concepts, refer to *Employed Wage and Salary Earners, Australia*, catalogue number 6248.0.
(Source: *Employed Wage and Salary Earners*, ABS catalogue number 6248.0.)

10

AVERAGE HOURS WORKED: Original

Month	Average weekly total hours worked, all employed persons ¹			Average weekly overtime hours ²		Percentage of employees working overtime
	Males	Females	Persons	Per employee	Per employee working overtime	
1994						
November	39.8	27.2	34.5	1.2	6.9	16.7
1996						
November	38.7	26.8	33.6	0.8	6.2	12.7
1997						
February	38.0	26.2	33.1	0.9	6.6	13.6
May	39.4	27.8	34.4	0.8	5.9	13.3
August	38.4	26.8	33.5	0.7	6.5	11.0
November	38.7	26.8	33.6	0.6	6.3	9.2

¹ For explanation of terms and concepts, refer to *Labour Force, Australia*, ABS catalogue number 6203.0.

² For explanation of terms and concepts, refer to *Job Vacancies and Overtime, Australia*, ABS catalogue number 6354.0.

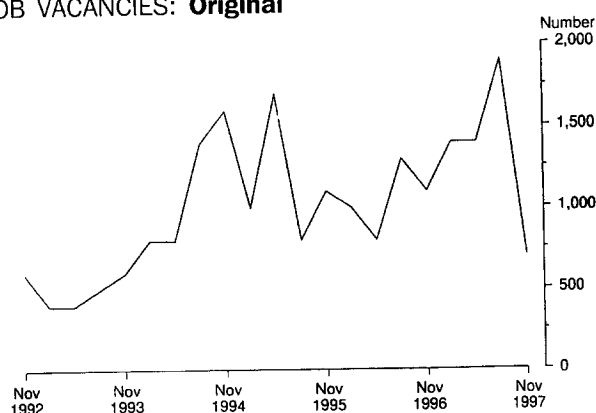
11 JOB VACANCIES¹: Original

Period	Number	Rate ² %
1994		
November	1 600	1.1
1996		
November	1 100	0.7
1997		
February	1 400	1.0
May	1 400	1.0
August	1 900	1.4
November	700	0.5

¹ For explanation of terms and concepts refer to *Job Vacancies and Overtime, Australia*, catalogue number 6354.0.

² Job vacancies are expressed as a percentage of the number of job vacancies divided by the number of employees plus job vacancies.

JOB VACANCIES: Original



12 INDUSTRIAL DISPUTES¹: Original

Month	Working days lost '000	Twelve months ending	Working days lost per thousand employees no.
1997		1997	
January	0.0	January	73
February	0.0	February	73
March	0.0	March	73
April	0.0	April	73
May	1.4	May	81
June	0.0	June	79
July	3.7	July	75
August	0.0	August	43
September	0.3	September	36
October	0.1	October	36
November	0.1	November	35
December	0.0	December	35
Twelve months ended 1997			
December	5.7		

¹ For explanation of terms and concepts, refer to *Industrial Disputes, Australia*, ABS catalogue number 6321.0.

13

AVERAGE WEEKLY EARNINGS OF EMPLOYEES¹: Original and trend

Survey reference period	Full-time adult males		All males	Full-time adult females		All females	Full-time adult persons		All employees
	Weekly ordinary time earnings	Weekly total earnings	Weekly total earnings	Weekly ordinary time earnings	Weekly total earnings	Weekly total earnings	Weekly ordinary time earnings	Weekly total earnings	Weekly total earnings
	\$	\$	\$	\$	\$	\$	\$	\$	\$
ORIGINAL									
1996									
August	666.90	699.20	624.30	556.30	567.40	387.70	629.10	654.10	506.50
November	688.50	728.50	643.00	574.20	584.90	393.70	649.90	680.00	517.70
1997									
February	705.80	742.10	658.80	584.30	594.80	407.80	664.40	691.90	533.10
May	707.30	744.60	652.70	576.30	586.20	397.00	662.30	690.20	524.20
August	717.60	753.90	636.40	583.90	592.20	400.70	671.10	697.80	519.40
November	732.70	765.40	661.60	595.00	605.40	399.10	686.10	711.20	528.00
TREND²									
1996									
August	672.50	709.80	632.10	567.80	579.30	391.10	637.20	665.90	511.00
November	686.70	723.20	642.80	571.30	582.20	394.20	647.30	675.10	518.00
1997									
February	700.40	737.10	648.50	576.40	586.40	399.50	657.90	685.40	523.90
May	711.00	748.00	650.60	581.90	591.80	402.70	666.80	694.40	526.30
August	719.60	755.90	652.40	586.80	596.30	401.50	674.10	701.40	526.40
November	728.00	762.90	654.50	591.30	600.20	396.70	681.20	707.50	524.80

¹ For explanation of terms and concepts, refer to *Average Weekly Earnings, States and Australia*, ABS catalogue number 6302.0.

² ABS Trend estimates for the most recent months are revised, see Explanatory Notes.

(Source: *Average Weekly Earnings, States and Australia*, ABS catalogue number 6302.0.)

14

WEEKLY AWARD RATES OF PAY INDEXES, FULL-TIME ADULT EMPLOYEES¹: Original

(Base: June 1985 = 100.0)

Industry	1994	1996	1997		
	June	June	April	May	June
Mining	137.7	150.9	150.9	150.9	150.9
Manufacturing	146.9	152.4	153.6	154.2	154.5
Electricity, gas and water	133.4	137.7	137.7	137.9	137.9
Construction	142.6	149.3	149.5	150.2	150.2
Wholesale trade	139.9	146.7	148.4	148.4	148.4
Retail trade	139.6	143.7	144.1	144.2	144.2
Transport and storage	138.9	145.7	148.7	148.9	148.9
Communication	135.4	135.4	135.4	135.4	135.4
Finance, property and business services	137.8	140.5	140.6	140.7	140.7
Public administration and defence	148.3	157.9	158.6	158.6	158.6
Community services	140.8	148.4	149.1	149.5	149.5
Recreation, personal and other services	149.2	155.9	158.2	159.2	159.2
Total all industries	141.7	147.9	148.7	149.0	149.1

¹ The Australian Bureau of Statistics (ABS) is currently developing a new Wage Cost Index. This index will measure quarterly movements in underlying wage rates resulting not only from changes to award rates but also from enterprise, workplace and individual employee agreements. For explanation of terms and concepts, refer to *Award Rates of Pay Indexes, Australia*, ABS catalogue number 6312.0.

15

SUMMARY OF ANNUAL MOVEMENTS IN WAGES AND PRICES¹: Original

Period	CPI. All groups Hobart	Price index of materials used in house building. All groups, Hobart ²	Price index of materials used in building other than house building. All groups, Hobart ²	Average weekly total earnings, full-time adult employees ³
PERCENTAGE CHANGE FROM PREVIOUS YEAR				
1994-95	3.1	4.0	1.9	2.7
1995-96	3.8	2.9	2.6	2.8
1996-97	1.5	-0.5	1.0	4.6
1995				
June	4.2	4.6	3.4	3.1
September	4.5	4.8	3.5	2.4
December	4.4	3.6	3.3	1.8
1996				
March	3.4	2.4	2.5	3.2
June	3.0	0.9	1.2	3.7
September	2.3	-0.2	0.9	3.0
December	1.8	-0.8	0.7	4.9
1997				
March	1.5	-0.5	1.1	6.2
June	0.6	-0.4	1.3	4.2
September	-0.4	-0.2	0.6	6.7
December	-0.1	+0.7	0.9	4.6

¹ Weekly award rates of pay collection has been discontinued from June 1997.

² Only quarterly data collected from June 1997. Earlier data has been re-compiled from monthly to quarterly.

³ March, June, September and December data relates to February, May, August and November survey dates as published in 6302.0.

(Sources: Consumer Price Index, ABS catalogue number 6401.0; Price Index of Materials Used in House Building, ABS catalogue number 6408.0, (quarterly from June 1997); Price Index of Materials Used in Other than House Building, ABS catalogue number 6407.0, (quarterly from June 1997); Average Weekly Earnings, States and Australia, ABS catalogue number 6302.0)

16

HOUSE PRICE INDEX NUMBERS¹, HOBART: Original

(Base of each Index: 1989-90 = 100.0)

	Established house price index		Project home price index	
	Index	% change ²	Index	% change ²
1994-95	129.0	5.3	121.3	3.1
1995-96	129.8	0.6	123.4	1.7
1996-97	128.5	-1.0	123.3	-0.1
1995				
December	129.1	-0.1	123.5	—
1996				
March	129.8	0.5	123.3	-0.2
June	131.2	1.1	123.3	—
September	130.2	-0.8	123.3	—
December	128.5	-1.3	123.3	—
1997				
March	130.4	1.5	123.3	—
June	124.9	-4.2	123.3	—
September	123.5	-1.1	123.3	—
December	123.9	0.3	123.3	—

¹ Used in calculating the mortgage interest charges component of the Consumer Price Index.

² Percentage change over previous period.

(Source: House Price Indexes: Eight Capital Cities, ABS catalogue number 6416.0)

CONSUMER PRICE INDEX, HOBART AND EIGHT CAPITAL CITIES COMBINED^{1, 2}: Original

(Base of each index: year 1989-90 = 100.0)

<i>Hobart</i>						
<i>Period</i>	<i>Food</i>	<i>Clothing</i>	<i>Housing</i>	<i>Household equipment and operation</i>	<i>Transportation</i>	<i>Tobacco and alcohol</i>
1995						
June	116.1	106.1	104.5	115.4	117.2	143.1
September	117.3	105.9	106.0	116.5	119.4	144.3
December	117.1	105.6	106.5	117.5	120.1	145.9
1996						
March	118.1	106.3	107.2	117.8	119.0	150.3
June	118.4	106.0	107.6	118.5	119.8	153.3
September	120.0	105.9	107.4	119.1	119.7	153.7
December	120.6	105.6	104.8	119.4	121.8	152.7
1997						
March	120.7	105.7	101.9	120.1	122.8	153.1
June	121.0	105.3	98.4	120.1	121.7	153.5
September	121.0	104.8	97.7	119.7	122.2	153.6
December	121.7	106.0	95.5	119.7	122.1	155.6

<i>Hobart</i>					<i>Weighted average of eight capital cities</i>	
<i>Period</i>	<i>Health and personal care</i>	<i>Recreation and education</i>	<i>Index, all groups</i>	<i>% change over previous period, all groups</i>	<i>Index</i>	<i>% change over previous period</i>
1995						
June	141.0	114.0	117.1	+0.9	116.2	+1.3
September	146.7	113.3	118.4	+1.1	117.6	+1.2
December	146.9	115.8	119.2	+0.7	118.5	+0.8
1996						
March	149.7	117.1	120.1	+0.8	119.0	+0.4
June	150.5	116.0	120.6	+0.4	119.8	+0.7
September	154.1	115.1	121.1	+0.4	120.1	+0.3
December	154.8	116.8	121.3	+0.2	120.3	+0.2
1997						
March	159.4	120.5	121.9	+0.5	120.5	+0.2
June	162.6	119.2	121.3	-0.5	120.2	-0.2
September	153.0	119.2	120.6	-0.6	119.7	-0.4
December	160.9	120.6	121.2	+0.5	120.0	+0.3

¹ Further information on construction of CPI indexes is contained in the bulletin *The Australian Consumer Price Index Concepts, Sources and Methods* (Catalogue No. 6461.0).

² The CPI is now published on a reference base of 1989-90 = 100.0.
(Source: *Consumer Price Index*, ABS catalogue number 6401.0.)

PRICE INDEX OF MATERIALS USED IN BUILDING OTHER THAN HOUSE BUILDING, HOBART: **Original**¹
(Base year: 1989-90 = 100.0)

<i>Index numbers for selected major building materials</i>						
<i>Period</i>	<i>Structural timber</i>	<i>Clay bricks</i>	<i>Ready mixed concrete</i>	<i>Precast concrete products</i>	<i>Steel decking, cladding etc.</i>	<i>Structural steel</i>
1994-95	124.5	116.8	117.8	122.2	107.7	116.4
1995-96	119.0	122.6	115.2	129.5	111.5	121.4
1996-97	110.3	125.3	116.2	132.2	115.0	126.2
1995						
June	125.8	118.0	117.8	122.5	107.4	117.5
September	123.0	119.8	116.9	130.3	110.8	119.6
December	120.0	123.2	116.0	130.3	111.0	121.2
1996						
March	118.0	123.4	115.3	129.1	111.8	121.9
June	115.0	124.0	112.7	128.4	112.3	123.0
September	113.3	124.5	114.8	132.6	112.3	125.3
December	109.9	125.2	116.0	132.6	112.2	126.0
1997						
March	109.2	125.7	116.7	132.2	116.5	126.7
June	108.9	125.7	117.4	131.2	118.8	126.8
September	107.5	127.9	114.9	131.2	118.9	126.9
December	106.6	129.4	116.8	131.2	118.9	127.1

<i>Index numbers for selected major building materials</i>							
<i>Period</i>	<i>Reinforcing steel bar, fabric and mesh</i>	<i>Aluminium windows</i>	<i>Fabricated steel products</i>	<i>Builders' hardware</i>	<i>Sand & aggregate</i>	<i>Paint & other coatings</i>	<i>Non-ferrous pipes & fittings</i>
1994-95	106.7	101.2	106.7	112.8	133.0	116.0	172.7
1995-96	108.9	104.5	108.9	118.3	133.1	120.1	172.9
1996-97	110.7	105.9	113.3	117.2	132.7	126.6	165.2
1995							
June	105.8	104.5	107.6	115.8	133.1	115.0	184.2
September	107.9	104.5	107.6	119.4	133.1	118.2	179.4
December	109.2	104.5	108.3	119.2	133.1	119.7	169.1
1996							
March	109.2	104.6	108.2	117.9	133.1	121.5	169.3
June	109.2	104.4	111.6	116.5	133.1	121.1	173.9
September	110.2	104.4	112.6	117.8	133.1	126.3	168.2
December	110.9	105.5	113.5	118.8	133.1	127.3	161.4
1997							
March	110.9	106.8	113.4	117.1	134.5	127.4	164.1
June	110.9	106.8	113.5	115.2	129.9	125.5	167.2
September	110.9	106.8	114.0	115.3	121.4	124.6	168.5
December	113.0	106.8	114.0	112.5	121.4	123.5	163.0

¹ Index numbers in this table have been recomputed to reflect the change to a quarterly collection basis from June 1997.
(Source: *Price Index of Materials Used in Other than House Building*, ABS catalogue number 6407.0.)

continued

	<i>All electrical materials</i>		<i>All mechanical services</i>		<i>All plumbing materials</i>	
<i>Period</i>	<i>Index</i>	<i>% change over previous period</i>	<i>Index</i>	<i>% change over previous period</i>	<i>Index</i>	<i>% change over previous period</i>
1994–95	110.8	+5.8	112.6	+2.7	124.6	+13.2
1995–96	118.6	+7.0	115.1	+2.2	127.7	+2.5
1996–97	117.4	–0.1	117.0	+1.7	122.8	–3.8
1995						
June	115.5	+2.9	114.1	+0.8	128.9	+0.6
September	118.6	+2.7	113.8	–0.3	128.7	–0.2
December	118.6	—	114.9	+1.0	127.4	–1.0
1996						
March	118.1	–0.4	115.3	+0.3	127.6	+0.2
June	119.1	+0.8	116.2	+0.8	127.0	–0.5
September	115.7	–2.9	117.1	+0.8	126.3	–0.6
December	118.3	+2.2	116.8	–0.3	120.8	–4.4
1997						
March	118.1	–0.2	116.8	—	121.4	+0.5
June	117.5	–0.5	117.1	+0.3	122.5	+0.9
September	117.6	+0.1	116.6	–0.4	122.8	+0.2
December	117.8	+0.2	116.8	+0.2	122.0	–0.7
	<i>All groups excluding electrical materials and mechanical services</i>		<i>All groups</i>			
<i>Period</i>	<i>Index</i>	<i>% change over previous period</i>	<i>Index</i>	<i>% change over previous period</i>		
1994–95	112.7	+1.5	112.2	+1.9		
1995–96	115.5	+2.5	115.1	+2.6		
1996–97	116.8	+1.1	116.3	+1.0		
1995						
June	114.1	+1.2	113.8	+1.2		
September	115.3	+1.1	114.8	+0.9		
December	115.7	+0.3	115.3	+0.4		
1996						
March	115.6	–0.1	115.2	–0.1		
June	115.3	–0.3	115.2	—		
September	116.3	+0.9	115.8	+0.5		
December	116.5	+0.2	116.1	+0.3		
1997						
March	117.0	+0.4	116.5	+0.3		
June	117.3	+0.3	116.7	+0.2		
September	117.1	–0.2	116.5	–0.2		
December	117.7	+0.5	117.2	+0.6		

¹ Index numbers in this table have been recomputed to reflect the change to a quarterly collection basis from June 1997.
(Source: Price Index of Materials Used in Other than House Building, ABS catalogue number 6407.0.)

¹ Index numbers in this table have been recomputed to reflect the change to a quarterly collection basis from June 1997.
(Source: Price Index of Materials Used in Other than House Building, ABS catalogue number 6407.0.)

Year or month	Dairy products ¹			Staff-hours worked	
	Whole milk ²	Factory butter ³	Factory cheese	Textile manufacturing ⁴	Vegetable preserving
	million litres	tonnes	tonnes	'000	'000
1994-95	436.5	8 105	20 529	1 527	1 838
1995-96	513.8	9 589	24 852	1 443	1 784
1996-97	529.4	10 869	25 398	1 349	1 534
1994					
November	65.7	1 194	3 132	144	145
1996					
November	74.4	1 367	4 041	119	107
1997					
September	52.6	625	2 704	107	91
October	82.0	1 348	3 896	110	80
November	81.4	1 185	3 733	91	n.y.a.

Year or month	Newsprint ⁵	Refined zinc	Metal, refin. index ⁶	Electricity
	'000 tonnes	'000 tonnes		million kW.h
1994-95	222.7	189.8	98.3	8 688
1995-96	242.9	207.8	104.7	9 100
1996-97	232.7	207.7	116.1	9 543
1994				
November	15.0	14.9	95.2	680
1996				
November	19.7	17.6	116.5	776
1997				
September	n.y.a.	16.4	108.7	n.y.a.
October	n.y.a.	17.8	118.4	n.y.a.
November	n.y.a.	15.7	117.4	n.y.a.

¹ Source: Australian Dairy Corporation.

² Includes the whole milk equivalent of farm cream intake.

³ Includes butter equivalent of butter oil.

⁴ Includes spinning, weaving and carpet making. Reported by establishments which manufacture textiles only, or manufacture clothing and textiles in the one plant.

⁵ Excludes production of directory newsprint and high grade specialty paper.

⁶ Metallurgical refining index (Base: 1979-80 = 100.0) Output from selected establishments covering the smelting and refining of ferro-alloys, zinc and aluminium. The weighting pattern is based on the establishments' value added as derived from the 1979-80 Manufacturing Census. For multi-product establishments, value added was apportioned to products on the basis of gross receipts from each product.

(Source: ABS unpublished data.)

20

LIVESTOCK SLAUGHTERING: **Original**

	Cattle					
	Bulls, bullocks and steers	Cows and heifers	Calves	Sheep	Lambs	Pigs
Year or month	'000	'000	'000	'000	'000	'000
1994-95	111.2	96.7	28.8	569.3	477.2	92.9
1995-96	95.4	88.9	41.4	349.7	393.3	86.5
1996-97	r 110.2	r 93.4	r 43.6	r 384.4	r 364.0	r 74.9
1996						
January	10.7	7.1	0.1	37.9	37.2	6.5
1997						
January	r 12.9	r 7.7	0.1	r 46.3	r 41.9	r 6.5
February	10.6	r 8.4	0.1	r 46.3	r 34.8	r 5.9
March	10.1	r 7.7	0.4	r 42.4	r 34.1	r 6.2
April	10.3	r 10.6	1.6	r 46.5	r 34.4	r 6.5
May	9.7	r 12.3	1.7	r 35.9	r 41.8	r 7.5
June	7.5	r 10.3	r 0.9	r 31.0	r 29.9	r 5.9
July	8.6	r 9.5	1.9	r 30.6	r 35.9	r 7.7
August	7.2	r 6.4	r 14.7	r 22.5	r 22.0	r 5.7
September	r 5.3	r 4.9	20.4	r 18.0	r 23.1	r 5.4
October	r 6.7	r 9.4	9.4	r 32.9	r 32.3	r 6.8
November	r 7.3	r 9.7	1.2	r 39.5	r 31.1	r 5.7
December	8.2	r 9.9	0.4	r 49.5	r 33.4	r 7.5
1998						
January	p 8.7	p 13.3	p 0.3	p 49.9	p 47.6	p 6.9

(Source: *Livestock Products, Australia*, ABS catalogue number 7215.0.)

(Source: *Livestock Products, Australia*, ABS catalogue number 7215.0.)

21

LIVESTOCK SLAUGHTERING: **Seasonally adjusted and trend**

Month	Seasonally adjusted			Trend		
	Cattle and calves	Sheep and lambs	Pigs	Cattle and calves	Sheep and lambs	Pigs
	'000	'000	'000	'000	'000	'000
1996						
January	19.1	64.3	7.6	19.3	63.7	7.4
1997						
January	r 20.9	r 69.8	r 6.8	r 21.7	r 65.4	r 6.3
February	r 22.2	r 69.9	r 6.6	r 22.1	r 67.1	r 6.4
March	r 21.7	r 63.1	r 6.3	r 22.6	r 68.0	r 6.6
April	r 24.7	r 73.9	r 6.6	r 23.0	r 68.2	r 6.6
May	r 23.1	r 66.3	r 6.7	r 23.1	r 68.3	r 6.5
June	r 21.6	r 59.4	r 5.9	r 23.2	r 69.0	r 6.4
July	r 24.0	r 76.3	r 7.0	r 23.0	r 70.2	r 6.3
August	r 25.2	r 79.7	r 6.1	r 22.8	r 71.6	r 6.3
September	r 19.4	r 60.5	r 5.8	r 23.0	r 72.8	r 6.3
October	r 24.7	r 81.8	r 7.0	r 23.7	r 73.9	r 6.4
November	r 24.4	r 72.7	r 6.0	r 24.7	r 74.8	r 6.5
December	r 23.0	r 73.5	r 6.4	r 25.9	r 75.6	r 6.6
1998						
January	32.0	78.5	7.4	27.1	75.6	6.7

(Source: ABS unpublished data)

22

MEAT PRODUCTION¹: Original

	Beef	Veal	Mutton	Lamb	Pigmeat ²	Total
Year or month	tonnes	tonnes	tonnes	tonnes	tonnes	tonnes
1994-95	49 907	977	11 230	8 412	5 982	76 509
1995-96	45 377	875	7 414	7 407	5 634	66 707
1996-97	r 51 723	r 907	r 8 170	r 6 876	r 4 934	r 72 610
1996						
January	4 517	5	814	700	424	6 459
1997						
January	r 5 371	r 4	r 996	r 793	r 436	r 7 599
February	r 4 912	r 5	r 995	r 656	r 393	r 6 960
March	r 4 572	r 11	r 902	r 645	r 412	r 6 541
April	r 5 331	r 37	r 989	r 650	r 425	r 7 431
May	r 5 461	r 39	r 749	r 791	r 496	r 7 536
June	r 4 416	r 21	r 644	r 564	r 389	r 6 034
July	r 4 467	r 42	r 639	r 677	r 437	r 6 262
August	r 3 550	r 302	r 452	r 415	r 362	r 5 081
September	r 2 478	r 412	r 365	r 436	r 345	r 4 037
October	r 4 113	r 192	r 675	r 612	r 430	r 6 022
November	r 4 251	r 51	r 820	r 578	r 362	r 6 062
December	r 4 576	r 15	r 1 020	r 621	r 447	r 6 679
1998						
January	p 4 995	p 14	p 1 027	p 892	p 436	p 7 364

¹ Carcass weight.

² Includes pork used for production of bacon and ham.

(Source: *Livestock Products, Australia*, ABS catalogue number 7215.0.)

23

PRINCIPAL MINERAL CONCENTRATES PRODUCED: Original

Year or quarter	Copper	Iron (pellets)	Lead	Lead-zinc	Tin	Zinc
Year or quarter	'000 tonnes	'000 tonnes	'000 tonnes	'000 tonnes	'000 tonnes	'000 tonnes
1994-95	59.4	1 483.8	97.4	45.3	14.3	350.6
1995-96	53.5	1 681.3	106.3	38.6	16.0	361.5
1996-97	99.7	809.4	101.4	38.0	16.3	356.9
1995						
September	4.5	463.0	28.4	11.2	4.1	93.6
December	r 7.8	416.0	29.7	6.8	4.1	98.1
1996						
March	19.8	326.9	24.1	11.4	3.5	84.8
June	21.5	475.4	24.1	9.2	4.3	85.0
September	26.0	439.3	30.6	10.3	3.9	88.6
December	25.6	366.7	24.9	11.0	4.0	89.5
1997						
March	24.0	3.3	22.9	10.2	3.9	85.6
June	24.2	—	23.0	6.4	4.6	93.3
September	27.2	—	22.5	5.4	4.8	88.6

(Source: *Tasmania—Development and Resources*)

24

SAWMILLS AND PLYWOOD MILLS, LOGS DELIVERED AND TIMBER PRODUCED: Original

Year or quarter	Tasmanian-grown logs delivered					Sawn, peeled and sliced timber produced ¹				
	Eucalypts	Hardwoods, excluding eucalypts ²	Plant-ation ³	Native softwoods ⁴	Total	Eucalypts	Hardwoods, excluding eucalypts ²	Plant-ation ³	Native softwoods ⁴	Total
		'000 m ³	'000 m ³	'000 m ³	'000 m ³		'000 m ³	'000 m ³	'000 m ³	'000 m ³
1994-95	653.1	12.6	304.9	2.8	973.4	212.5	4.3	142.7	0.6	360.1
1995-96	602.8	13.0	343.7	1.4	960.9	192.4	4.4	152.0	0.5	349.3
1996-97	500.8	17.0	352.9	1.2	871.9	165.8	4.3	158.0	0.5	328.5
1995										
December	139.1	1.5	70.2	0.2	211.0	49.0	1.0	36.0	0.2	86.2
1996										
March	136.6	6.7	98.1	0.3	241.7	41.5	0.9	41.2	0.1	83.7
June	142.9	3.0	95.5	0.6	242.0	46.5	1.2	38.8	0.1	86.6
September	135.5	2.5	96.1	—	234.2	47.3	1.1	42.3	0.1	90.8
December	112.7	3.9	82.3	0.5	199.4	40.1	0.9	40.6	0.1	81.8
1997										
March	108.7	6.6	85.0	0.4	200.8	34.0	1.0	36.6	—	71.6
June	143.9	3.9	89.4	0.3	237.5	44.5	1.2	38.4	0.2	84.3
September	139.5	2.7	98.3	0.3	240.9	52.4	1.5	42.3	0.1	96.3
December	123.4	3.1	73.4	0.2	200.2	45.3	1.0	41.2	0.1	87.6

¹ Includes plywood, veneer and sliced timber production converted to an equivalent cubic measurement.

² Includes blackwood, myrtle, sassafras etc.

³ Radiata pine.

⁴ Includes Huon pine, celery top pine and King William pine.

(Source: ABS unpublished data.)

25

CHIPPING AND GRINDING OF WOOD¹: Original

Year or quarter	Producing locations ²	Materials used ³		
		Logs delivered ⁴	Sawmill offcuts	Chipped and ground wood production
	no.	'000 m ³	'000 m ³	('000 tonnes green weight)
1994-95	31	4 064.1	394.2	4 343.1
1995-96	31	3 510.0	457.9	3 820.1
1996-97	27	3 207.4	433.2	3 609.3
1995				
December	31	932.1	104.6	939.9
1996				
March	32	842.6	109.8	958.0
June	31	799.6	125.3	878.1
September	30	767.5	133.5	870.9
December	30	805.1	117.5	908.4
1997				
March	28	759.7	87.0	829.2
June	27	875.1	95.2	1 000.9
September	27	936.1	112.8	1 064.1
December	28	999.2	113.6	1 100.1

¹ Both hardwoods and softwoods, separate details are not available.

² Capable of producing at end of year or actually producing during quarter.

³ Data reported by weight, converted to cubic measure by the factor 0.95 m³ per tonne.

⁴ Includes log equivalent of limbwood and billets.

(Source: ABS unpublished data.)

Year or quarter	Sawmilling and plywood milling			Chipping and grinding ¹			Total		
	Crown land ²	Private land	Total	Crown land ²	Private land	Total	Crown land ²	Private land	Total
	'000 m ³	'000 m ³	'000 m ³	'000 m ³	'000 m ³	'000 m ³	'000 m ³	'000 m ³	'000 m ³
1994-95	780.3	193.2	973.4	1 966.8	2 097.3	4 064.1	2 747.1	2 290.4	5 037.6
1995-96	773.5	187.4	960.9	1 579.6	1 930.4	3 510.0	2 353.1	2 117.8	4 470.9
1996-97	725.6	146.4	871.9	1 627.4	1 580.0	3 207.4	2 353.0	1 726.3	4 079.3
1995									
December	165.2	45.8	211.0	388.3	543.8	932.1	553.5	589.6	1 143.1
1996									
March	202.3	39.4	241.7	405.3	437.3	842.6	607.6	476.7	1 084.3
June	191.9	50.1	242.0	347.9	451.8	799.6	539.7	501.8	1 041.6
September	194.3	39.9	234.2	403.5	364.0	767.5	597.8	403.9	1 001.7
December	162.5	36.9	199.4	411.0	394.1	805.1	573.5	430.9	1 004.5
1997									
March	170.3	30.5	200.8	375.7	383.9	759.7	546.0	414.5	960.5
June	198.5	39.1	237.5	437.2	437.9	875.1	635.7	477.0	1 112.6
September	201.0	39.8	240.9	464.9	471.2	936.1	665.9	511.0	1 177.0
December	166.6	33.6	200.2	485.0	514.3	999.2	651.5	547.9	1 199.4

¹ Logs used are generally below sawmilling standard; includes log equivalent of limbwood and billets.

² Comprises all areas (including concession areas) from which royalties are payable to Forestry Tasmania.
(Source: ABS unpublished data.)

Year or month	New residential building			Value					
	Houses	Other ¹	Conversions etc.	Total dwelling units	New dwelling units	Alterations and additions ² to residential building	Non-residential building ³		Total of all building
							Private	Total	
	no.	no.	no.	no.	\$'000	\$'000	\$'000	\$'000	\$'000
1994-95	2 576	596	14	3 176	244 623	39 963	117 984	161 567	446 152
1995-96	1 938	601	7	2 546	217 445	36 890	119 849	216 752	471 086
1996-97	1 593	251	17	1 861	157 428	35 323	121 490	158 970	351 720
1996									
January	135	92	1	228	23 749	3 199	18 028	42 277	69 225
1997									
January	118	25	10	153	12 241	3 513	9 258	10 878	26 632
February	129	24	—	153	13 702	3 253	8 862	12 507	29 461
March	125	—	—	125	10 922	3 719	7 861	10 140	24 781
April	144	51	1	196	16 900	3 165	4 758	5 454	25 520
May	121	25	1	147	12 768	2 723	16 913	18 091	33 582
June	104	13	1	118	9 464	2 523	13 294	13 619	25 606
July	109	56	—	165	14 289	3 695	5 761	7 807	25 790
August	121	14	1	136	10 987	3 481	4 944	6 444	20 913
September	131	18	—	149	13 803	2 845	3 806	13 474	30 122
October	128	35	—	163	13 878	3 413	8 584	10 722	28 014
November	120	8	—	128	11 098	2 816	3 459	7 341	21 255
December	130	24	1	155	13 535	2 740	10 958	12 655	28 931
1998									
January	123	10	—	133	11 690	3 138	9 993	13 066	27 894

¹ New individual dwelling units (e.g. flats, home units and villa units).

² Valued at \$10,000 and over.

³ Comprises non-residential building (new plus alterations and additions) valued at \$50,000 and over.

(Source: Building Approvals, Tasmania, ABS catalogue number 8731.6.)

Month	Total number of dwellings ²			Total value of commitments ³		
	Original	Seasonally adjusted	Trend	Original	Seasonally adjusted	Trend
	no.	no.	no.	\$m	\$m	\$m
1996						
November	909	924	968	60.7	61.1	64.9
December	787	858	905	54.4	58.7	61.1
1997						
January	742	826	857	49.5	53.8	58.3
February	778	809	830	56.1	57.6	57.1
March	814	815	819	59.2	58.8	56.9
April	933	874	814	64.0	59.7	57.4
May	943	865	809	63.6	58.1	58.1
June	756	724	799	54.6	56.6	58.4
July	786	774	791	57.7	57.3	r 58.7
August	801	792	r 790	60.7	59.8	59.2
September	796	808	r 797	62.8	63.2	60.1
October	845	834	r 809	60.8	59.6	r 61.0
November	756	776	r 819	56.6	57.8	r 61.7
December	816	874	r 827	64.3	67.5	r 62.3
1998						
January	682	803	829	52.3	60.7	62.7

¹ New seasonal adjustment factors resulting from the annual seasonal reanalysis were introduced in the January 1998 issue.

² Includes new dwellings, established dwellings and refinancing. Excludes alterations and additions.

³ Commitment is a firm offer of housing finance. It either has been, or is normally expected to be, accepted. Includes commitments to provide housing finance to employees and commitments accepted and cancelled in the same month. Excludes alterations and additions. Includes refinancing.

(Source: Housing Finance for Owner Occupation, Australia, ABS catalogue 5609.0.)

Month	Deposits				
	Current bearing interest	Current – not bearing interest	Fixed	Investment savings accounts	Statement savings accounts
	\$m	\$m	\$m	\$m	\$m
1997					
January	662	246	1 763	583	235
February	695	241	1 764	605	229
March	692	252	1 780	606	231
April	687	250	1 791	600	231
May	695	249	1 760	600	230
June	685	249	1 750	600	219
July	710	242	1 750	602	220
August	712	239	1 751	608	227
September	714	236	1 706	608	232
October	736	234	1 679	608	234
November	740	237	1 656	605	231
December	771	251	1 690	611	238
1998					
January	775	250	1 685	620	237

Month	Deposits			
	Passbook/School savings accounts	Other	Total	Loans ²
	\$m	\$m	\$m	\$m
1997				
January	127	129	3 745	4 466
February	123	103	3 759	4 493
March	122	103	3 786	4 694
April	121	102	3 781	4 412
May	119	101	3 754	4 423
June	117	100	3 719	4 500
July	114	94	3 733	4 559
August	114	98	3 748	4 590
September	112	95	3 704	4 547
October	110	95	3 696	4 530
November	107	99	3 675	4 541
December	102	95	3 758	4 630
1998				
January	100	95	3 743	5 741

¹ Details are the averages of weekly figures for each month. The figures are derived from returns submitted by banks authorised under the *Banking Act* together with similar returns voluntarily submitted by the State banks; they exclude the Reserve Bank.

² Excludes non-resident loans.

(Source: Reserve Bank of Australia.)

Year or quarter	New buildings and structures			Equipment, plant, and machinery		Total
	\$m			\$m		\$m
1994–95	143			546		689
1995–96	190			423		613
1996–97	128			559		687
1997						
March	30			140		169
June	30			144		175
September	37			136		174
December	57			129		186

¹ Estimates based on a sample survey and therefore subject to sampling variability. Covers selected industries only—mining, manufacturing, finance, property and other selected industries.

² Data revised back to June quarter 1987. See *Improvements to ABS Economic Statistics* (catalogue number 1357.0).

(Source: *State Estimates of Private New Capital Expenditure*, ABS catalogue number 5646.0.)

31

PASSENGER ARRIVALS AND DEPARTURES, TASMANIA¹: Original

Period	Arrivals				Departures Total	Cruise ships	
	By air— interstate	By air— international	By sea	Total		Arrivals	Departures
1993	694 244	5 144	115 381	814 769	814 835	2 033	2 033
1994	745 508	4 166	128 644	878 318	880 936	6 592	6 592
1995	811 784	3 982	116 869	932 635	931 278	6 199	6 199
1996	831 040	2 999	115 486	949 525	961 468	5 286	5 286
1997 p	796 870	2 238	139 446	938 554	963 533	4 600	4 600
1997							
January p	76 390	399	14 296	91 085	111 118	2 250	2 250
February p	69 018	383	11 718	81 119	76 323	2 350	2 350
March p	72 393	441	12 952	85 786	92 811	—	—
April p	66 932	331	11 820	79 083	86 079	—	—
May p	55 569	—	8 680	64 249	76 312	—	—
June p	58 491	—	10 223	68 714	67 235	—	—
July p	53 633	—	6 512	60 145	67 778	—	—
August p	57 543	—	10 346	67 889	70 256	—	—
September p	70 562	—	13 566	84 128	79 173	—	—
October p	69 626	—	12 548	82 174	80 690	—	—
November p	66 037	391	10 563	76 991	75 593	120	120
December p	80 676	293	16 222	97 191	80 165	—	—
1998							
January p	81 910	369	14 430	96 709	115 230	2 730	2 730

¹ The following persons are not included in these statistics: passengers under three years of age accompanied by an adult; passengers travelling on chartered flights with minor carriers; passengers travelling on private or VIP flights; and passengers from or departing for overseas other than direct flights to New Zealand.
(Source: Tourism Tasmania.)

32

TOTAL PASSENGER ARRIVALS BY AIR AND SEA, TASMANIA: Original, seasonally adjusted and trend

Period	Original	Seasonally adjusted ¹	Trend ²
1997			
January p	91 085	74 711	76 126
February p	81 119	76 488	76 431
March p	85 786	72 875	77 349
April p	79 083	84 263	78 473
May p	64 249	80 288	79 615
June p	68 714	80 569	80 370
July p	60 145	74 822	80 534
August p	67 889	86 108	80 250
September p	84 128	77 187	79 782
October p	82 174	82 924	79 451
November p	76 991	75 518	78 142
December p	97 191	78 042	78 861
1998			
January p	96 709	80 357	78 803

¹ There is an annual recalculation of seasonal adjustment factors to include the most recent year's arrivals. This occurs at the end of each financial year and may cause revisions to previously published seasonally adjusted and trend figures. A full time series of seasonally adjusted and trend series from January 1971 is available on request, telephone (03) 6222 5912.

² Trend estimates for the most recent months have been revised, see Explanatory Notes.
(Source: Tourism Tasmania. ABS unpublished data)

HOTELS, MOTELS, ETC. WITH FACILITIES						
Period	Original		Room nights		Original	
	Establishments ¹ no.	Guest rooms ¹ no.	Seasonally adjusted ² no.	Trend estimates ² no.	Room occupancy rate %	Takings from accommodation \$'000
December quarter						
1995	180	5 503	n.a.	n.a.	57.0	22 090
1996	187	5 604			54.8	22 556
1997	213	5 921			53.2	23 993
1995						
October	n.a.	n.a.	88 939	91 008	55.9	7 269
November	n.a.	n.a.	91 897	90 909	63.4	7 850
December	180	5 503	91 259	90 743	52.1	6 971
1996						
October	n.a.	n.a.	89 691	87 436	55.0	7 577
November	n.a.	n.a.	90 116	87 283	60.0	7 916
December	187	5 604	86 558	86 898	49.2	7 063
1997						
October	n.a.	n.a.	92 052	91 193	53.2	8 053
November	n.a.	n.a.	87 820	92 000	56.1	8 073
December	213	5 921	94 404	92 472	50.4	7 867
HOLIDAY UNITS						
Period	Original		Unit nights		Original	
	Establishments ¹ no.	Units ¹ no.	Seasonally adjusted ² no.	Trend estimates ² no.	Unit occupancy rate %	Takings from accommodation \$'000
December quarter						
1995	54	830	n.a.	n.a.	52.8	2 958
1996	57	861			52.9	2 990
1997	62	944			50.6	3 238
1995						
October	n.a.	n.a.	12 289	12 752	50.7	928
November	n.a.	n.a.	13 180	12 824	56.4	1 011
December	54	830	13 263	12 813	51.5	1 019
1996						
October	n.a.	n.a.	13 076	12 909	52.0	953
November	n.a.	n.a.	13 557	13 141	56.2	1 020
December	57	861	13 546	13 301	50.7	1 017
1997						
October	n.a.	n.a.	14 146	13 982	51.2	1 076
November	n.a.	n.a.	13 810	14 117	52.4	1 045
December	62	944	14 086	14 220	48.1	1 116
CARAVAN PARKS						
Period	Original		Site nights		Original	
	Establishments ¹ no.	Sites and cabins ¹ no.	Seasonally adjusted ² no.	Trend estimates ² no.	Site occupancy rate %	Takings from accommodation \$'000
December quarter						
1995	72	6 440	n.a.	n.a.	33.2	1 923
1996	73	6 500			33.1	1 983
1997	73	6 477			34.1	2 138
1995						
October	n.a.	n.a.	64 892	65 168	30.0	583
November	n.a.	n.a.	64 947	65 652	32.4	616
December	72	6 440	66 968	66 034	37.2	724
1996						
October	n.a.	n.a.	66 305	66 643	30.8	596
November	n.a.	n.a.	67 052	66 418	32.3	644
December	73	6 500	66 118	66 635	36.2	742
1997						
October	n.a.	n.a.	66 093	68 783	31.6	623
November	n.a.	n.a.	69 184	68 610	33.3	672
December	73	6 477	67 974	68 432	37.4	844

¹ At end of quarter. ² Seasonally adjusted and trend estimates are revised annually because of yearly seasonal reanalysis.
(Source: Tourist Accommodation, Tasmania, ABS catalogue number 8635.6.)

34 REGISTRATIONS OF NEW MOTOR VEHICLES¹: Original

Year or month	Passenger vehicles	Other vehicles ²	Total (excl. motor cycles)	Vehicles registered by vehicle rental businesses ³	Motor cycles
	no.	no.	no.	no.	no.
1995	10 919	2 874	13 793	1 952	393
1996	11 445	2 726	14 171	2 384	462
1997	12 512	2 606	15 118	2 458	518
1996					
January	670	203	873	5	36
1997					
January	756	179	935	4	49
February	746	152	898	3	34
March	738	220	958	3	39
April	815	232	1 047	1	46
May	941	270	1 211	6	36
June	861	267	1 128	22	28
July	1 217	259	1 476	366	46
August	1 094	220	1 314	270	44
September	1 339	164	1 503	547	44
October	1 197	190	1 387	252	44
November	916	192	1 108	119	40
December	1 892	261	2 153	865	68
1998					
January p	752	173	925	12	40

¹ Includes State and Commonwealth Government-owned motor vehicles other than those belonging to the defence services. Excludes tractors, plant and equipment, caravans and trailers.

² Comprises utilities, panel vans, rigid and articulated trucks and other truck-type vehicles (i.e. motor vehicles designed for purposes other than freight carrying, e.g. campervans, tow trucks, ambulances and hearses) and buses.

³ These figures are included in previous columns.

(Source: *Motor Vehicle Registrations Australia*, ABS catalogue number 9301.0. ABS unpublished data.)

35 TURNOVER OF RETAIL ESTABLISHMENTS AT CURRENT PRICES^{1, 2}: Original and trend

Period	Original \$m	Trend estimates ³	
		\$m	Change from corresponding month of previous year %
1996			
January	250.3	255.6	5.4
1997			
January	256.6	258.3	1.1
February	233.8	258.8	1.0
March	252.1	259.3	1.1
April	254.6	260.2	1.5
May	263.7	261.7	2.4
June	244.1	264.0	3.7
July	259.4	267.2	5.2
August	255.2	270.2	6.5
September	r 255.8	272.2	7.1
October	278.1	272.7	6.9
November	r 283.9	271.8	6.0
December	r 349.8	270.1	4.9
1998			
January	260.4	267.8	3.7

¹ Survey has been re-designed—see Information Paper (8511.0).

² Data revised back to 1982. See *Improvements to ABS Economic Statistics* (Catalogue number 1357.0).

³ Trend estimates for the most recent months have been revised. See Explanatory Notes..

(Source: *Retail Trade, Australia*, ABS Catalogue number 8501.0)

	NSW	Vic.	Qld	SA	WA	Tas.	Aust. ¹
Population							
Estimated resident population, September 1997 ('000) p	6 293.0	4 617.4	3 417.4	1 481.6	1 805.4	472.7	18 588.6
Proportion of Australian population, September 1997 (%) p	33.9	24.8	18.4	8.0	9.7	2.5	100.0
Population growth rate, 12 months to September 1997 (%) p	1.2	1.0	1.8	0.4	1.8	-0.4	1.2
Labour Force							
Employment growth, 12 months to February 1998 (trend series) (%)							
Males	0.8	1.2	3.7	0.2	2.7	-1.1	1.7
Females	0.3	1.6	4.3	-3.2	1.7	0.7	1.3
Persons	0.6	1.4	4.0	-1.3	2.3	-0.3	1.5
Unemployment rate (trend series), February 1998 (%)	7.5	8.1	8.9	9.9	7.0	10.8	8.1
Unemployment growth, 12 months to February 1998 (trend series) (%)	-5.9	-9.9	-6.2	3.8	-4.5	0.9	-5.9
Participation rate (trend series), February 1998 (%)	61.6	63.2	65.0	60.9	65.9	59.2	63.2
Average weekly overtime worked per employee, November 1997 (hours)	1.1	1.3	1.0	1.0	1.3	0.6	1.1
Job vacancy rate, November 1997 (%)	1.0	1.0	1.2	0.6	0.9	1.5	1.0
Working days lost through industrial disputes, 12 months to December 1997 (days per '000 employees)	64	115	71	15	85	35	74
Wages and Prices							
Average weekly total earnings, full-time adult employees (trend series) November 1997 (\$)							
Males	846.7	812.2	770.7	748.1	839.8	762.9	815.1
Females	673.8	653.5	618.3	604.1	616.6	600.2	649.7
Persons	779.9	755.6	713.3	698.5	755.1	707.5	753.2
Average weekly total earnings, full-time adult employees, growth rate (trend series), 12 months to November 1997 (%)	2.8	4.5	5.0	2.1	3.3	4.8	3.6
Consumer price index, all groups, annual growth to December quarter 1997 (%) ²	-0.2	-0.1	0.5	-1.1	-0.7	-0.1	-0.2
Building							
% change in the number of new residential dwelling units approved in 12 months ended January 1998, over the same period previous year	15.6	31.4	9.2	18.1	4.9	-15.8	14.9
Private Investment and Retail Trade							
% change in private new capital expenditure, 12 months ended December 1997, over the same period previous year	4.8	1.6	15.5	26.5	3.8	6.8	4.7
% change in <i>trend</i> estimates turnover of retail establishments, January 1998 (change from corresponding month of the previous year)	4.0	3.8	7.2	7.0	2.9	3.7	4.7
Transport							
% change in number of new motor vehicles (excluding motorcycles) registered 12 months ended January 1998, over the same period previous year	10.1	13.4	10.0	11.7	9.3	6.1	11.2
Agriculture							
% change in the number of livestock slaughtered 12 months ended January 1998 over the same period previous year							
Cattle and calves	8.4	12.8	25.3	9.0	4.9	13.6	14.5
Sheep and lambs	2.8	11.6	12.2	10.7	3.8	19.4	6.6
Tourism							
Room occupancy rates for hotels, motels etc. with facilities, December quarter 1997(%)	59.0	56.1	59.5	58.3	58.7	53.2	58.2
Australian National and State Accounts							
% change in Domestic (State) Final Demand, ³ Average 1989-90 Prices							
Trend Series							
Sept. qtr 1997 to Dec. qtr 1997	1.4	—	1.4	1.2	2.1	0.2	1.2
Dec. qtr 1996 to Dec. qtr 1997	4.7	4.1	6.9	4.8	9.7	1.2	5.5

¹ Australian totals include the ACT and NT.² CPI applies to State capitals.³ Total of four types of expenditure: Private investment, Private consumption, Government investment, Government consumption.

EXPLANATORY NOTES

INTRODUCTION

1 This publication contains latest figures for a comprehensive range of economic indicators. Statistics shown in this publication are the latest available at the date of preparation and may be subject to revision in subsequent issues. In a number of cases figures appearing in this publication are preliminary and are subject to revision in subsequent issues. Reference should therefore always be made to the latest issue or to the statistical publication on the specific subject.

SEASONAL ADJUSTMENT AND TREND ESTIMATION

2 Seasonal adjustment is a means of removing the estimated effects of normal seasonal variation from the series so that the effects of other influences on the series can be more clearly recognised. Seasonal adjustment does not aim to remove the irregular or non-seasonal influences which may be present in any particular month. This means that month-to-month movements of the seasonally adjusted estimates may not be reliable indicators of trend behaviour.

3 The smoothing of seasonally adjusted series reduces the impact of the irregular components of the seasonally adjusted series and creates trend estimates. These trend estimates are derived by applying a 13-term Henderson-weighted moving average to all months except the last six. The last six monthly trend estimates are obtained by applying surrogates of the Henderson average to the seasonally adjusted series. Trend series are used to analyse the underlying behaviour of the series over time.

4 While this smoothing technique enables estimates to be produced for the latest month, it does result in revisions to the most recent months as additional observations become available. Generally, subsequent revisions become smaller and after 3 months have a negligible impact on the series. Revisions also occur as a result of the annual review of seasonal factors.

5 Users may wish to refer to the ABS Publication *A Guide to Interpreting Time Series – Monitoring 'Trends' – An Overview* (1348.0) for more detailed information on smoothing seasonally adjusted time series data.

RELATED PUBLICATIONS

6 Current publications produced by the ABS are listed in the *Catalogue of Publications and Products* (1101.0). The ABS also issues, on Tuesdays and Fridays, the *Release Advice* (1105.0) which lists publications to be released in the next few days. The *Catalogue* and *Release Advice* are available from any ABS office.

UNPUBLISHED STATISTICS

7 As well as the statistics included in this and related publications, the ABS may have other relevant unpublished data available. Inquiries should be made to Information Inquiries on (03) 6222 5800 or to any ABS office.

EFFECTS OF ROUNDING

8 Some figures have been rounded and discrepancies may occur between totals and sums of the component items.

SYMBOLS AND OTHER USAGES

n.a.	not available
n.y.a.	not yet available
..	not applicable
—	nil or rounded to zero
p	preliminary—figure or series subject to revision
r	figure or series revised since previous issue

FOR MORE INFORMATION . . .

The ABS publishes a wide range of information on Australia's economic and social conditions. A catalogue of publications and products is available from any of our offices (see below).

INFORMATION CONSULTANCY SERVICES

Information tailored to special needs of clients can be obtained from the Information Consultancy Service available at ABS Offices (see below).

ABS PRODUCTS

A large number of ABS products is available from the ABS Bookshops (see below). The ABS also provides a subscription service – you can telephone the ABS Subscription Service Australia wide toll free on 1300 3663 23.

ELECTRONIC SERVICES

A large range of data is available via on-line services, diskette, magnetic tape, tape cartridge and CD ROM. For more details about our electronic data services, contact any ABS office (see below) or e-mail us at:

■ client.services@abs.gov.au

GENERAL SALES AND INQUIRIES

■ Sydney 02 9268 4611	■ Adelaide 08 8237 7100
■ Melbourne 03 9615 7755	■ Hobart 03 6222 5800
■ Brisbane 07 3222 6351	■ Darwin 08 8943 2111
■ Perth 08 9360 5140	■ Canberra 02 6252 6627

■ Information Services, ABS
PO Box 10, Belconnen ACT 2616



2130360004986

ISSN 1034-1803

RRP \$18.00